

# NYSERDA Update

- Erdman Brook Erosion Mitigation Project
- Tank T-1 Leachate Removal Project



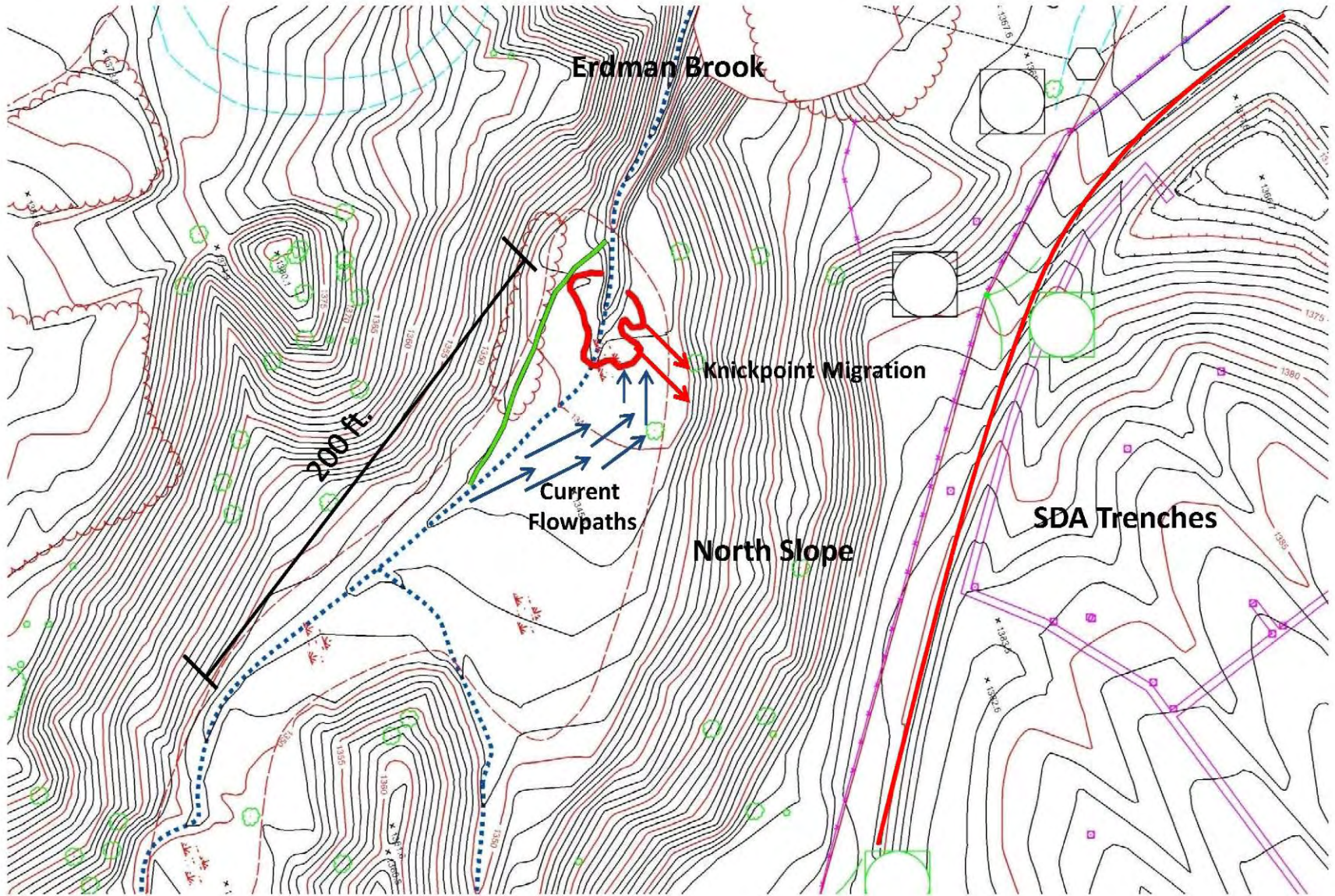
**SDA North Slope**


**Erdman Brook Knickpoint**

**NYSERDA**



# Erdman Brook Erosion Mitigation Project





**New Access Road**

An aerial photograph of a construction site on a hillside. A dirt road, labeled 'New Access Road', runs across the upper left and middle of the image. A yellow skid steer loader is parked on the left side of the road, and a person in a yellow safety vest is walking on it. In the background, a yellow excavator is working on a pile of white material. A dashed line indicates a 'New Erdman Brook Flow Path' that follows the road and then curves to the right. A solid line indicates an 'Old Erdman Brook Flow Path' that follows a similar route but is lower and ends in an arrowhead pointing right. The terrain is covered with trees and dense vegetation. The NYSERDA logo is in the bottom left corner.

**New Erdman Brook Flow Path**

**Old Erdman Brook Flow Path**

# Brush Clearing



Diversion Channel



NYSERBA



**Diversion Channel**



DEERE

120D

Knickpoint Removal

NYSDERDA



**Knickpoint Armoring**



Stream Channel Armoring

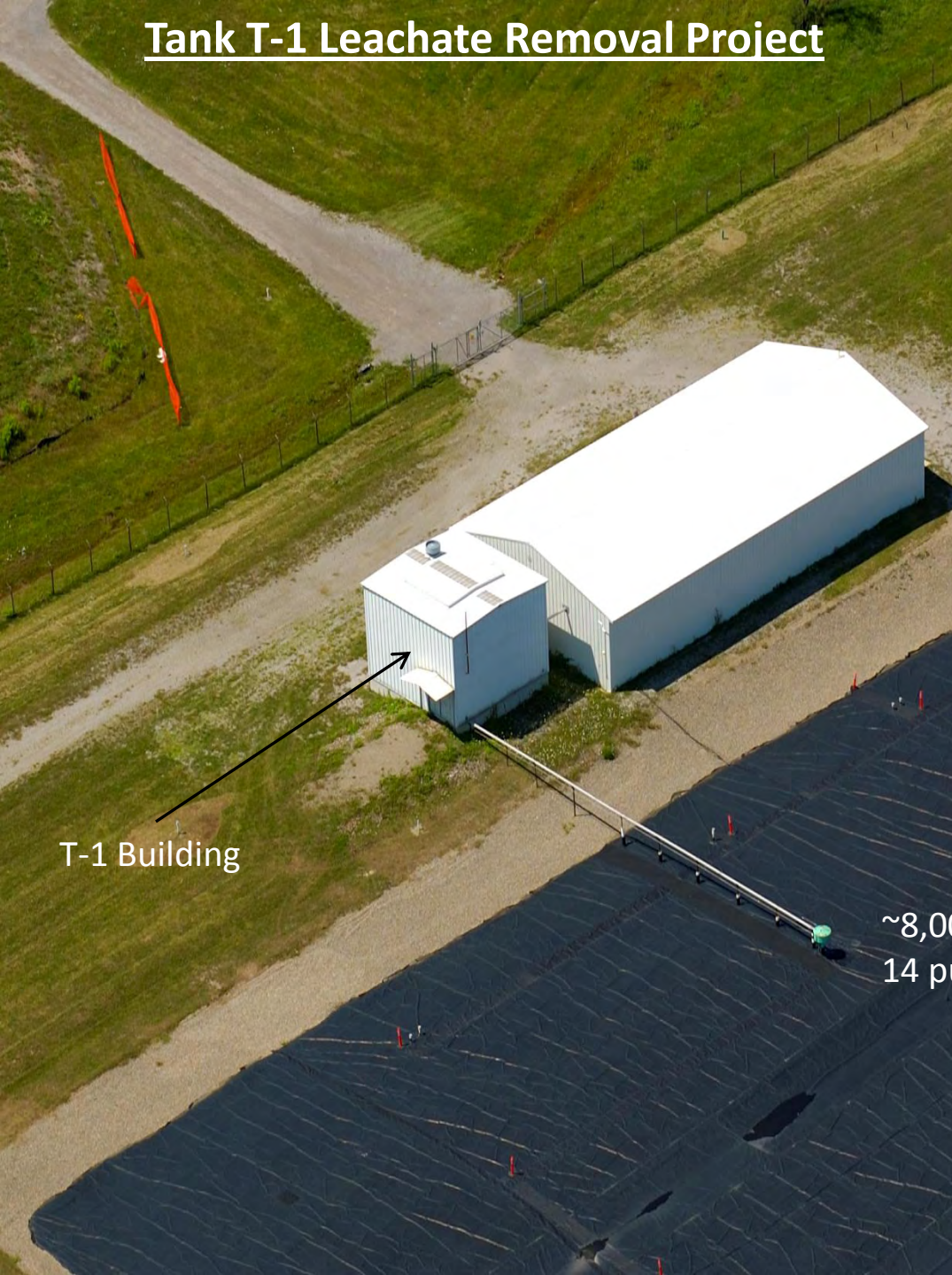
**New Erdman Brook Channel**





**Erdman Brook Channel – January 25, 2010**

# Tank T-1 Leachate Removal Project



T-1 Building



Trench 14 Transfer Line

~8,000 gallons of leachate from Trench 14 pumped into tank in T-1 Building

A large, cylindrical, rusted metal tank is suspended by several thick cables from a complex network of steel beams and pipes in an industrial facility. The tank is the central focus, showing significant corrosion and discoloration. The background consists of a white ceiling with dark steel trusses and two bright, circular overhead lights. The overall scene suggests a heavy industrial or construction environment.

## Two Phase Project

Phase 1 – Leachate Removal (*Completed November 20-24, 2009*)

Phase 2 – Tank Removal and Dismantlement/Waste Disposal  
T-1 Building Clean Closure (RCRA)

## Phase 1 - Leachate Removal



Transfer System Design, Installation, and Testing

On-Site Radiological and Chemical Sampling and Analysis



## Phase 1 - Leachate Removal



Leachate pumped from tank to containers on truck



# Phase 2 – Tank Removal and Dismantlement/Waste Disposal

T-1 Building Roof Hatch



## Phase 2 – T-1 Building Clean Closure

