

Proposed Phase 1 Studies Process

Citizen Task Force Meeting

Paul Bembia, NYSERDA
and
Bryan Bower, DOE

June 23, 2010



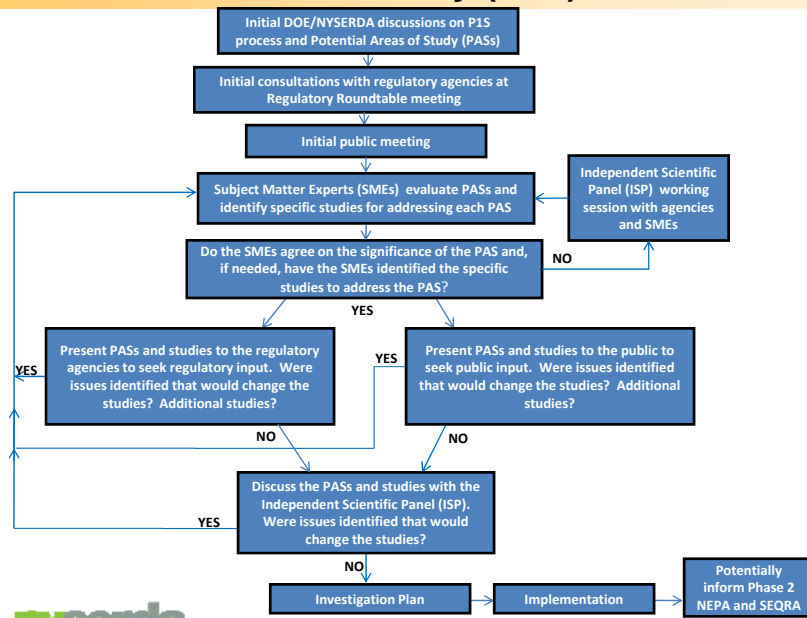
Phase 1 Studies

- **NYSERDA and DOE have drafted a proposed process for identifying and conducting the Phase 1 Studies. The proposed process includes:**
 - Subject Matter Experts to evaluate potential areas of study and help identify the specific studies to be conducted.
 - Regular meetings and opportunities for review and input from NYSDEC, NRC, EPA, and NYSDOH regarding the potential areas of study, specific studies, progress and results.
 - A three-member Independent Scientific Panel to provide guidance to the agencies and Subject Matter Experts on the potential areas of study, specific studies, progress and results.
 - Regular opportunities to obtain input from the public (including the general public, the CTF, environmental groups, etc.).
 - An independent facilitator to assist in the process for accomplishing the objectives.
 - To potentially inform Phase 2 decisionmaking, studies will be completed within 10 years.



CTF Meeting – June 23, 2010

Overview of Phase 1 Study (P1S) Process



nysesda
Planning, Administration, Distribution

CTF Meeting – June 23, 2010

Phase 1 Studies

- **Potential Areas of Study:**

- ✓ Soil erosion
- ✓ Groundwater flow and contaminant transport
- ✓ Catastrophic release of contamination and impact on Lake Erie
- ✓ Slope stability and slope failure
- ✓ Seismic hazard
- ✓ Probabilistic vs. deterministic dose and risk analysis
- ✓ Alternate approaches to and cost of complete waste and tank exhumation
- ✓ Viability, cost, and benefit of partial exhumation of waste, and removal of contamination
- ✓ Exhumation uncertainties and benefit of pilot exhumation activities
- ✓ In-place closure containment technologies
- ✓ Engineered barrier performance
- ✓ Additional characterization needs
- ✓ Cost discounting and cost benefit analyses over long time periods

- **A protocol for identifying potential Phase 1 Studies is being developed.**



nysesda
Planning, Administration, Distribution

CTF Meeting – June 23, 2010