



# West Valley Demonstration Project Phase I Decommissioning Project Status



*One Project. One Team. One Goal.*

Presented by: Dan Coyne, CHBWW

April 24, 2013



**EM** Environmental Management

safety ❖ performance ❖ cleanup ❖ closure

[www.em.doe.gov](http://www.em.doe.gov)

# Safety Performance

- CHBWV has worked 164 days (approximately 228,353 work hours) without a lost-time work accident or illness
- Initiatives: Health & Wellness, VPP STAR, Mentoring First-Line Supervisors



**EM** *Environmental Management*

safety ❖ performance ❖ cleanup ❖ closure

[www.em.doe.gov](http://www.em.doe.gov)

# Milestone 1 Accomplishments

Milestone 1: Complete high level waste (HLW) canister relocation

- Approved Vertical Cask Transporter (VCT) equipment specification/ preliminary design-authorized material procurements
- Repaired Vitrification Cell shield door
- NAC provided preliminary drawings for Cask Construction Project in the North Parking Lot
- Design/planning for High-Level Waste (HLW) canister pad continues – pre-qualified bidder



EDR Waste Removal for Shield Door Repair



**EM** Environmental Management

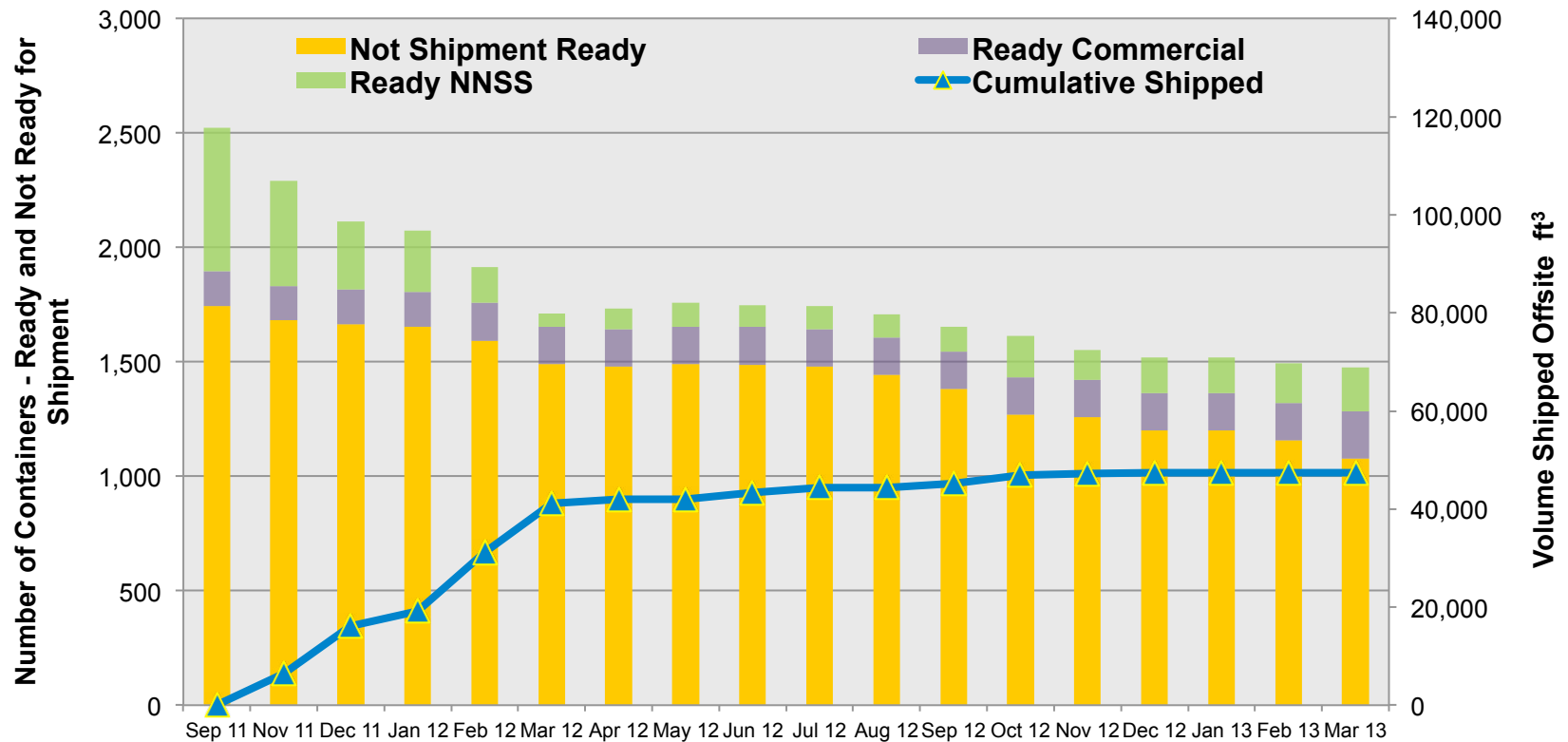
safety ❖ performance ❖ cleanup ❖ closure

[www.em.doe.gov](http://www.em.doe.gov)

# Milestone 2 Accomplishments

Milestone 2: Process, ship and dispose of all legacy waste off-site

## Milestone 2 Legacy Waste Shipping Status



**EM Environmental Management**

safety ❖ performance ❖ cleanup ❖ closure

[www.em.doe.gov](http://www.em.doe.gov)

# Milestone 3 Accomplishments

Milestone 3: Demolition and removal of the Main Plant Process Building (MPPB) and the Vitrification Facility (VF)

- Main Plant Process Building (MPPB) - Deactivation
  - Completed removal of asbestos containing material in the Radio/Analytical Chemical Laboratory
  - Removed 1,000 linear feet of piping in the liquid waste Cell
  - Completed asbestos removal in Plant Office 3<sup>rd</sup> Floor
  - Lower extraction aisle ‘demolition’ ready
- Vitrification Facility - Deactivation
  - Completed Vitrification Cell aisle deactivation
  - Completed Vitrification Cell airlock door repair



Asbestos abatement in Analytical Aisle



Window removal from MPPB Office



**EM** Environmental Management

safety ❖ performance ❖ cleanup ❖ closure

[www.em.doe.gov](http://www.em.doe.gov)



# Milestone 3 Accomplishments

## Cold, Dark, and Dry Initiatives

- Electrical disconnect installations for 14 supplemental heating units continue
- Working supplemental heater installation for Utility Room (UR)
- Site well design is 30% complete (clarifier, lake source, etc.)



**New Utility Room Natural Gas Heater**



**EM Environmental Management**

safety ❖ performance ❖ cleanup ❖ closure

[www.em.doe.gov](http://www.em.doe.gov)

# Milestone 4 Accomplishments

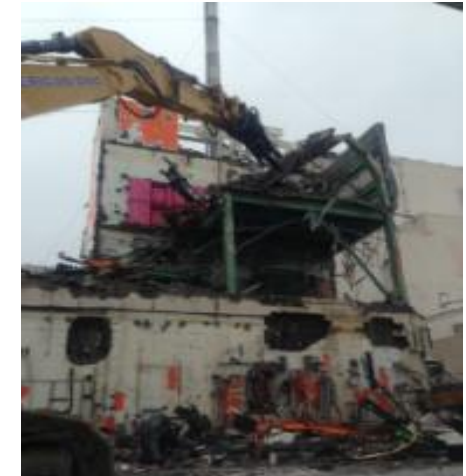
Milestone 4: Complete all work described in the Performance Work Statement

## 01-14 Building

- Continue demolition of facility

## BOSF

- Work Instruction Package (WIP) development for Vitrification Diesel Fuel Oil Storage Pad, and New Cooling Tower



01-14 Building Demolition  
South Side 3<sup>rd</sup> Floor

## New Generation Waste Shipments

- 2,430 ft<sup>3</sup> construction debris industrial waste
- 65,070 ft<sup>3</sup> to date



01-14 Demolition  
North Side Pipe Chase

[www.em.doe.gov](http://www.em.doe.gov)



**EM** Environmental Management

safety ❖ performance ❖ cleanup ❖ closure

# Look Ahead

Project Description	Target
Milestone 1: Complete high level waste (HLW) canister relocation	
Storage Pad Design	Design is expected April 26
Milestone 2: Process, ship and dispose of all legacy waste off-site	
Initiate processing of 243 high moisture cement drums in preparation for shipment	October
Milestone 3: Demolition and removal of the Main Plant Process Building (MPPB) and the Vitrification Facility (VF)	
Complete 01-14 Building demolition	May
Complete Vitrification Cell equipment clean out	September
Complete removal of all asbestos containing materials from the laboratories, laundry and MPPB office areas	April 30 – September 30
Milestone 4: Complete all work described in the Performance Work Statement	
Restoration of Balance of Site Facilities (Foundations of Old Warehouse, Count Lab, Waste Test Facility, vitrification diesel oil storage pad)	July



**EM Environmental Management**

safety ❖ performance ❖ cleanup ❖ closure

[www.em.doe.gov](http://www.em.doe.gov)



# Questions?



***EM*** *Environmental Management*

*safety ❖ performance ❖ cleanup ❖ closure*

[www.em.doe.gov](http://www.em.doe.gov)