

# Thomas Corners Road Bridge Replacement

July 2013



## Thomas Corners Road Bridge Location



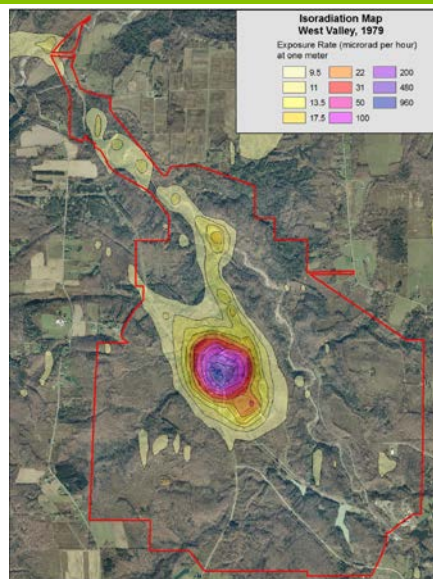
## Easements Requested by Cattaraugus County



3

**nyscrda**  
Energy. Innovation. Solutions.

## 1979 Aerial Radiation Survey



4

**nyscrda**  
Energy. Innovation. Solutions.

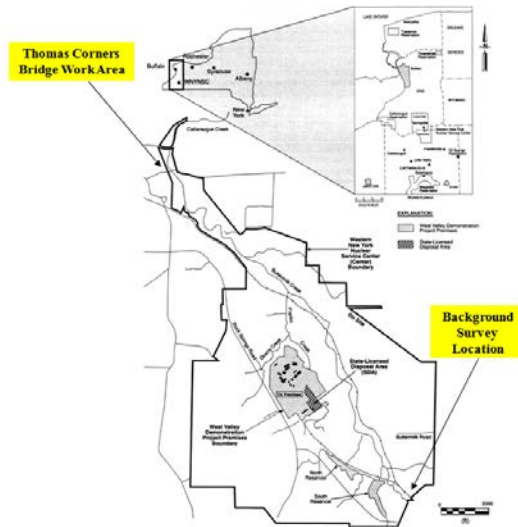
## Buttermilk Creek Preliminary Survey Areas



5

**nyserda**  
Energy. Innovation. Solutions.

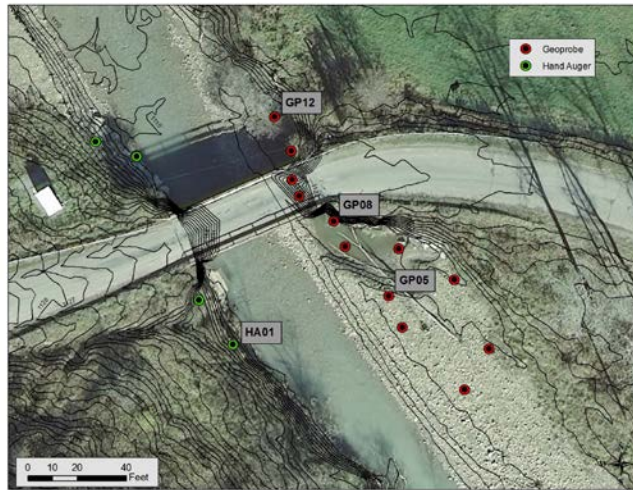
## Background Survey Location



6

**nyserda**  
Energy. Innovation. Solutions.

## Buttermilk Creek Sample Locations



7

**nyscrda**  
Energy. Innovation. Solutions.

## Thomas Corners Bridge Sample Results

- Gamma scan results showed no activity significantly above background
- None of the analytical results indicated gross alpha or tritium levels over 2X background
- Two samples (HA01 and GP05) showed gross beta levels slightly over 2X background
- One sample (HA01) indicated Cs-137 levels of ~15 picocuries/gram, significantly above the background value of ~0.5 picocuries/gram, but not at levels of concern for worker protection
  - A second sample taken from the HA01 location did not show elevated Cs-137

8

**nyscrda**  
Energy. Innovation. Solutions.

## Bridge Replacement Status

- Cattaraugus County began demolition work June 6, 2013
- NYSERDA provided radiation survey coverage during potentially impacted soil/sediment disturbance activities
  - Surveys included soils, sediments, construction debris, and equipment
  - No contamination was discovered during demolition activities
  - All demolition debris met acceptance criteria for disposal in a New York State landfill
- NYSERDA will continue to provide radiation survey coverage as needed; e.g., surveys to support bank stabilization work



Bridge Just Prior to Demolition – June 6, 2013



Bridge During Demolition Phase – June 10, 2013

## Bridge Replacement Status



Bridge Construction as of 7-18-13