



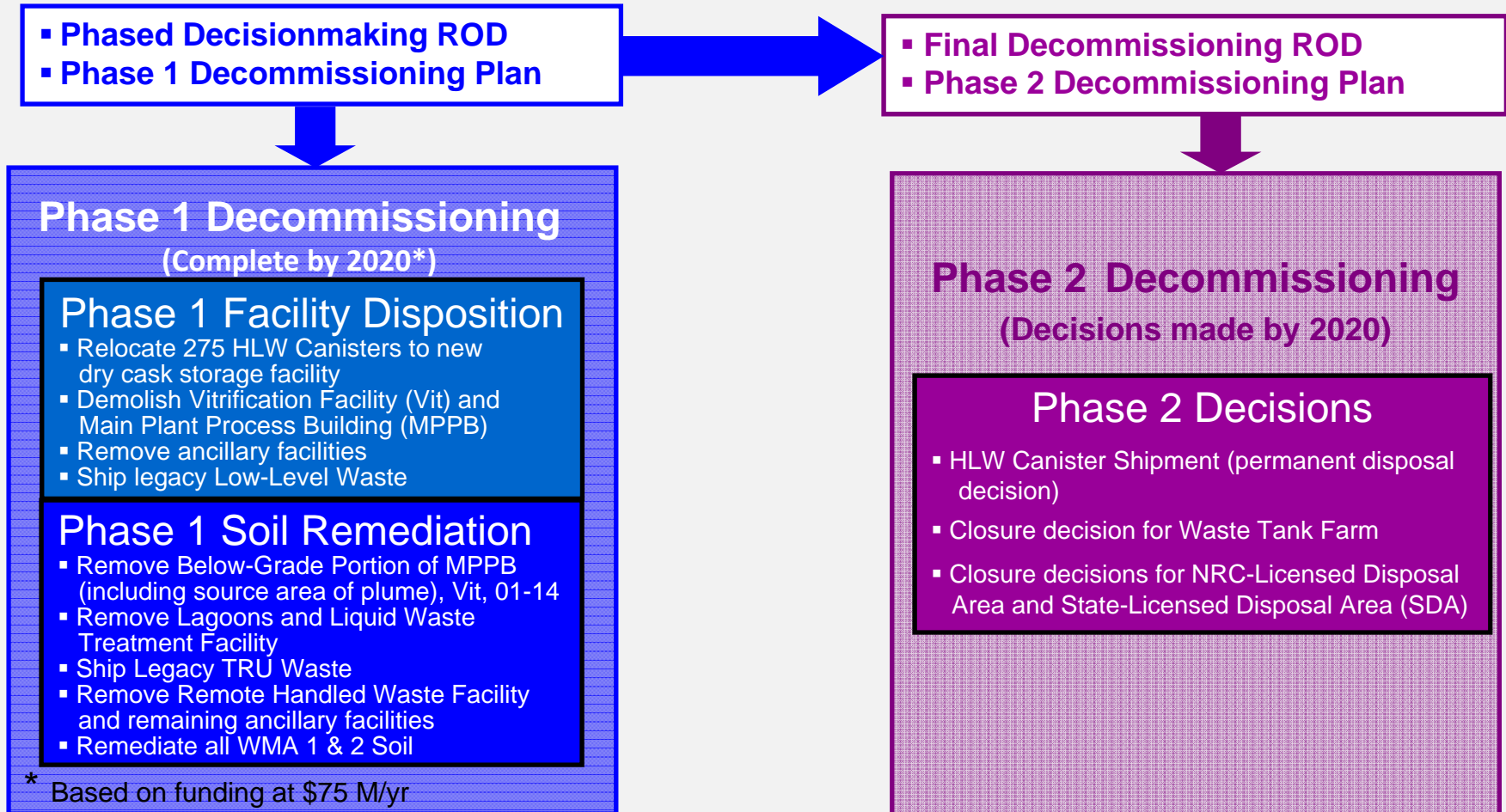
# **DOE/NYSERDA Path Forward to Phase 2 Decommissioning Decisions**

**for the West Valley Demonstration Project and  
the Western New York Nuclear Service Center**

**March 26, 2014**



# Phased Decisionmaking





## Path Forward to Phase 2 Decommissioning Decisions

DOE and NYSEERDA have developed an integrated approach for making Phase 2 decisions for the West Valley Demonstration Project (WVDP) and the Western New York Nuclear Service Center (Center).

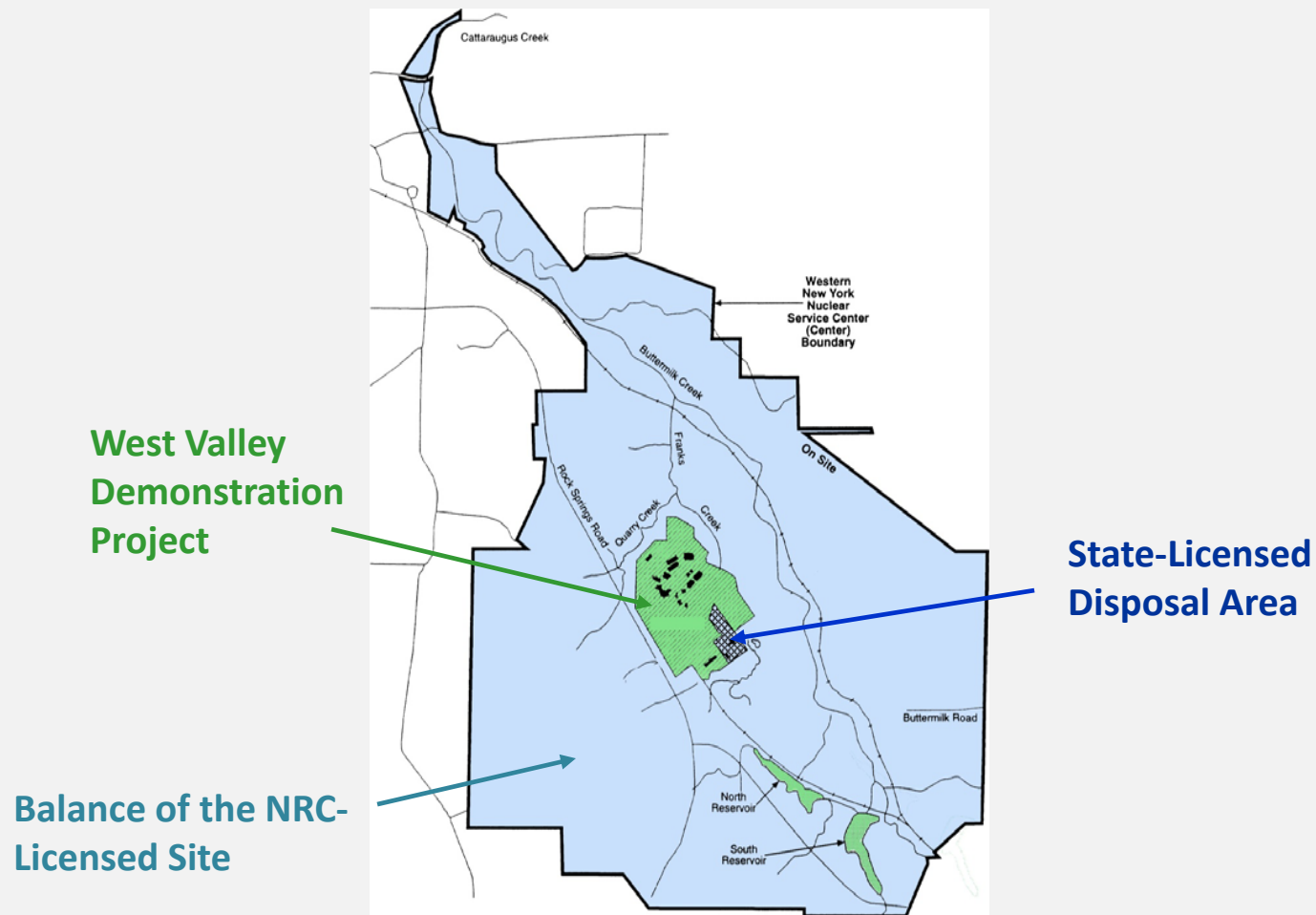
This approach includes:

- Framework for analyzing the entire Center
- Addressing uncertainty in the Phase 2 analysis
- Decisions for all facilities
- Supplemental EIS



# Path Forward to Phase 2 Decommissioning Decisions

## Framework for Analyzing the Entire Center





## Path Forward to Phase 2 Decommissioning Decisions



### Framework for Analyzing the Entire Center

- U.S. Nuclear Regulatory Commission's (NRC) Final Policy Statement applies to the WVDP and the NRC-Licensed portion of the Western New York Nuclear Service Center (Center).
- NRC's Policy Statement does not apply to the State-Licensed Disposal Area (SDA), however the NRC supports a coordinated approach for the entire NRC-Licensed site and the SDA.
- DOE and NY SERDA have agreed to use the NRC's License Termination Rule criteria as prescribed in the NRC's West Valley Policy Statement as the framework to evaluate all facilities at the WVDP and Center, including the SDA.
- This integrated approach will provide a consistent and equal analysis for all facilities at the Center.



## Path Forward to Phase 2 Decommissioning Decisions



### Addressing uncertainty in the Phase 2 analysis

- Uncertainty in the long-term analysis was at the heart of many of the technical issues raised with respect to the 2010 FEIS.
- Phase 1 Studies are underway to address specific technical issues. Other data collection activities will also help to identify and reduce uncertainty.
- Approach will build upon the 2010 FEIS deterministic performance assessment and incorporate probabilistic analytical methods.
- Deterministic and probabilistic sensitivity studies will be used to identify key uncertainties and provide focus for data collection and model development efforts.
- A probabilistic performance assessment will be prepared to evaluate uncertainty and to provide an estimate of the uncertainty in the long-term site analysis.





## Path Forward to Phase 2 Decommissioning Decisions



### Decisions for all facilities

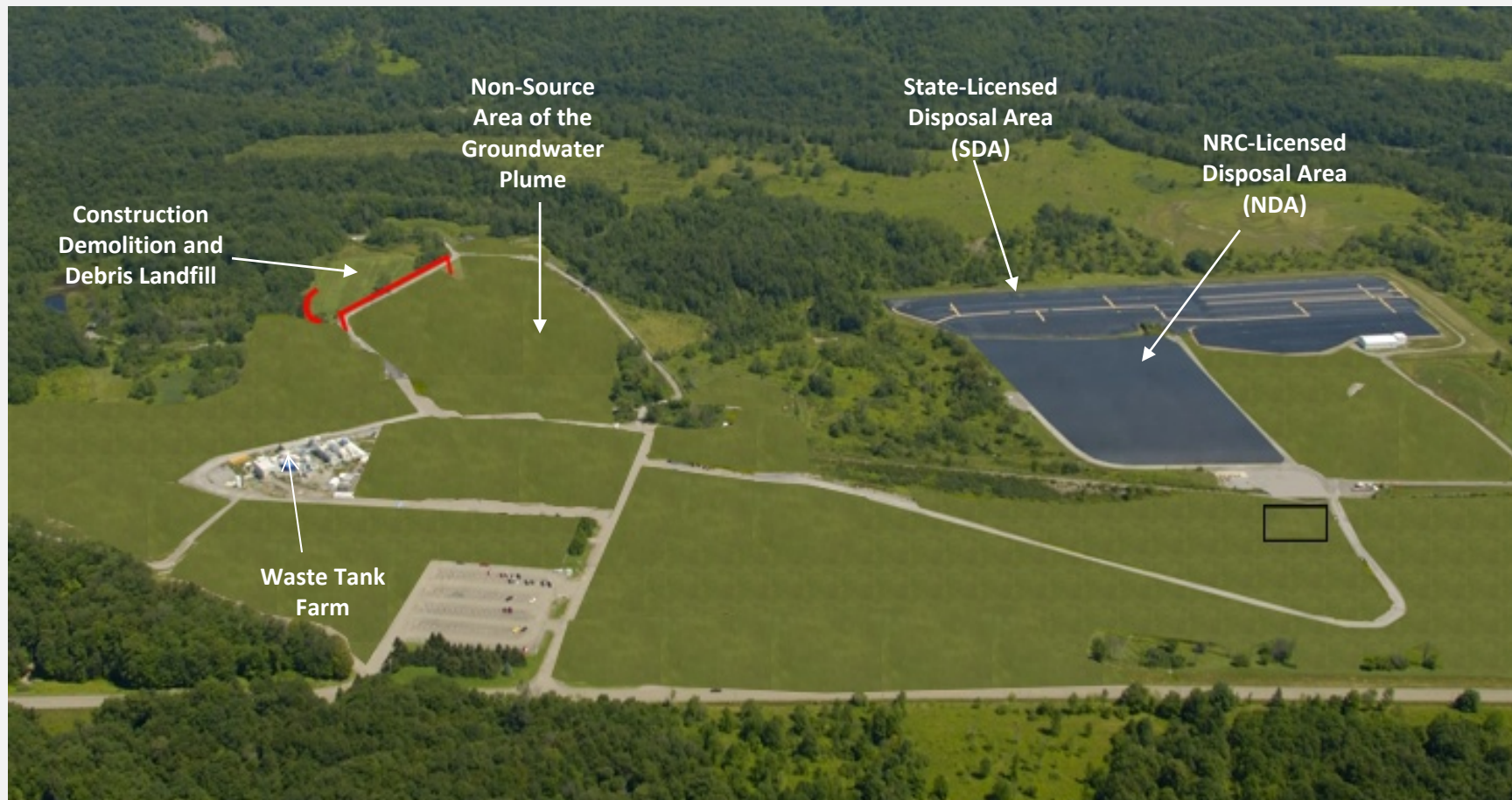
The integrated approach will support making Phase 2 decisions for all remaining WVDP and Center facilities, including:

- High Level Waste Tanks
- NRC-Licensed Disposal Area
- State-Licensed Disposal Area
- Construction Demolition and Debris Landfill
- Non-Source Area of the Plume
- Surface water streams
- Cesium Prong
- Balance of the Center Property



## Path Forward to Phase 2 Decommissioning Decisions

### Decisions for all facilities







## Path Forward to Phase 2 Decommissioning Decisions

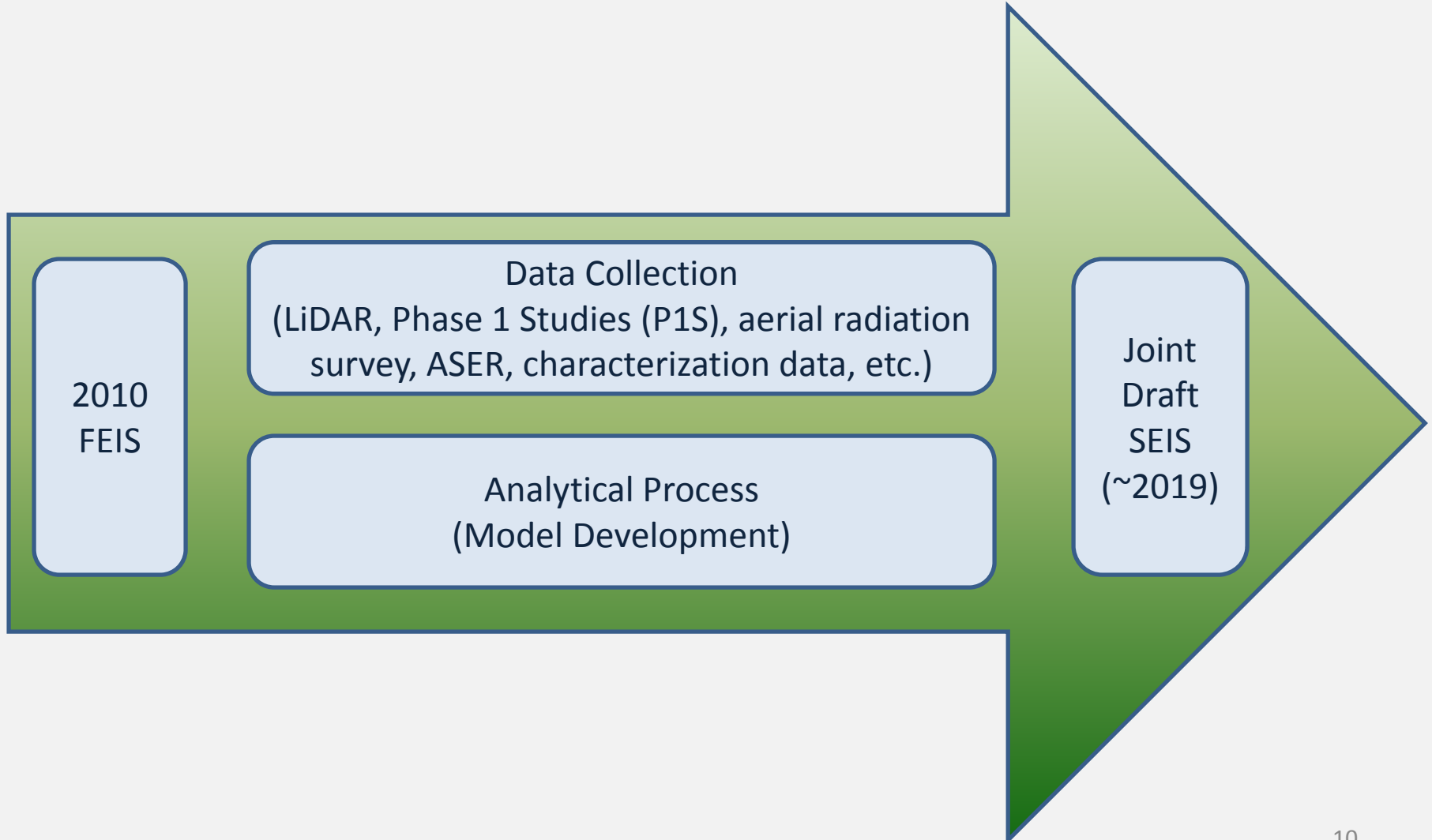
### Supplemental EIS

DOE and NYSEERDA have agreed to prepare a Supplemental Environmental Impact Statement (SEIS) to support the Phase 2 decisions:

- The SEIS will be prepared under a jointly managed contract.
- The agencies will share the cost of the SEIS equally.
- The probabilistic performance assessment and estimate of uncertainty will be useful inputs to the SEIS analysis.



## Path Forward to Phase 2 Decommissioning Decisions





## Path Forward to Phase 2 Decommissioning Decisions



### Next Steps

- Execute Probabilistic Modeling Contract (2014)
- Model Development (2014-2017)
- Continue ongoing data collection activities such as: LiDAR, aerial radiation survey, characterization work and P1S (2014-2017)
- Execute NEPA/SEQRA contract (2017)
- Issue Joint DOE/NYSERDA Draft SEIS for stakeholder review and comment (2019)
- Publish Joint DOE/NYSERDA Phase 2 Final SEIS (2020)
- Publish Phase 2 DOE ROD and NY SERDA Findings Statement (2020)



## Path Forward to Phase 2 Decommissioning Decisions



### Summary

- NYSEERDA and DOE have agreed on a path forward for making Phase 2 decisions for the WVDP and Center.
- We will use an integrated, consistent approach to evaluate all of the facilities and contamination at the Center, including the SDA.
- Sensitivity studies will be used to focus data collection and modeling efforts and a probabilistic performance assessment will be used to help address uncertainty.
- The agencies will prepare a joint Supplemental EIS for the Phase 2 decisions.
- This approach presents a path forward for making the Phase 2 decisions and allows the agencies to continue to move forward in a cooperative manner.