



CHBWV Project Update

John Rendall

Regulatory Strategy Manager
CH2M HILL B&W West Valley

April 23, 2014

Milestone 1 – HLW Relocation Project

- Objective: Relocate waste from Main Plant to a stand-alone dry cask storage system
 - 275 HLW canisters
 - 2 evacuated canisters
 - 1 non-routine HLW canister (WV-413)
 - 2 miscellaneous debris drums
- Technical Approach
 - Perform “operational decon” of canisters
 - Load 5 canisters into an overpack nested within the shielded cask
 - Remotely weld overpack
 - Secure cask lid
 - Transfer to new storage location



Milestone 1 - HLW Relocation Status

HLW Storage System Component Status

- Pad
 - Construction complete
 - Preparing for temporary drainage removal
- Vertical Storage Casks
 - First 8 fabricated on site
 - Fabrication of 8 more planned for later this year
- HLW Overpacks
 - First group of 8 in production
 - Delivery expected in June



Construction Area Silt Fence



Overpack Testing at Vendor Location

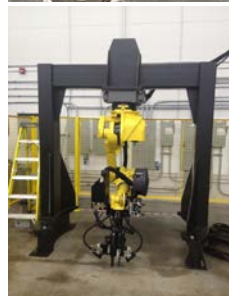
Milestone 1 – HLW Relocation

HLW Storage Project Equipment Status

- Cask movement equipment
 - GT-50 Tugger on site
 - Remaining equipment is in fabrication for 2014 delivery
- Overpack Welder
 - Fabrication 90% complete
 - Weld testing and qualification planned for May/June



GT-50 Tugger



Overpack Welding Station

Milestone 1 - HLW Relocation

HLW Relocation Pathway Status

- Load In Facility
 - Evaluating upgrade options to support
 - Vertical Storage Cask handling
 - Welding system installation
- Equipment Decontamination Room
 - Structural evaluations of subfloor complete
 - Recommendations under review
 - Preparing to fill Soaking Pit with grout
- Haul Path from MPPB to Storage Pad
 - Upgrades planned for this year



Haul Path Upgrades Planned for 2014

Milestone 2- Waste Operations

Waste Processing and Disposition Activities are categorized as

- Legacy (in storage at the start of the CHBWV contract)
- Newly Generated (generated as a result of current activities)

Processing and disposal activities for waste with a pathway for disposal involves

- Low-level waste (LLW)
- Mixed low-level waste (MLLW)
- Industrial Waste
- Hazardous Waste



Industrial Waste Roll Off

Milestone 2- Waste Operations

Current Radiological Waste Activities

- Processing activities
 - Contact handled
 - Waste Processing Area (WPA)
 - Remote handled
 - Remote-Handled Waste Facility
- Waste Management activities
 - Off-site waste shipments for treatment and disposal
 - Overpacking and relocating RH-TRU waste in the Chemical Process Cell
 - Planned shipment of oversized packages
 - Managing on-site inventory



Contact-Handled Waste Processing in the WPA

Milestone 2- Waste Operations

Legacy Waste Disposition Status through March 2014

- Approximately 140,000 ft³ in storage at start of contract
- Processed and shipped ~77,000 ft³ for disposal to date
 - Variety of container types (drums, boxes, intermodals)
 - Waste types include PPE, demolition debris, soils, expended equipment
 - 84 shipments to date

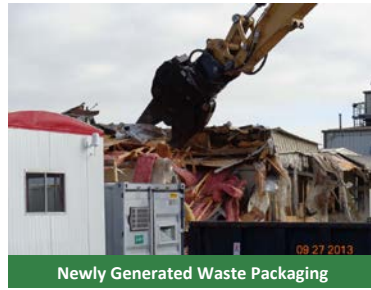


Lag Storage Facility Before and After 2013 Shipping Campaign

Milestone 2- Waste Operations

Newly Generated Waste

- Container types include drums, boxes and intermodals
- Waste includes PPE, demolition debris, soils, expended equipment
- Contract-to-date shipping status through March 2014
 - Industrial Waste – 147,231 ft³
 - Hazardous/Universal Waste – 472 ft³
 - LLW – 114,744 ft³
 - MLLW – 737 ft³



Milestone 2- Waste Operations

Waste Type	Treatment	Treatment and Disposal Locations	Notes	Cost*
LLW		Commercial facilities in TN, UT and TX and National Nuclear Security Site (NNS), NV	No cost for LLW disposal at NNS	Disposal: Varies from \$0 - ~\$30/ft ³ Transportation: ~\$11,500 - ~\$15,000 per truckload
MLLW	All MLLW requires treatment prior to disposal (i.e., liquid solidification, waste encapsulation)	Commercial facilities in TN, FL, UT and WA and NNS	Some facilities charge single rate for treatment and disposal No charge for disposal of MLLW that meets Land Disposal Restriction (LDR) requirements at NNS	Treatment: Ranges from ~\$10,000 per drum up to \$150,000 per box Disposal: Varies from \$0 - ~\$140/ft ³ Transportation: ~\$12,000 - ~\$15,000 per truckload
Hazardous/Universal/Industrial		Commercial facilities in IN, PA, and NY		Combined cost for treatment, disposal, and transportation. Total cost ~\$10,000/yr.
Construction and Demolition Debris		Commercial facilities in NY and PA	Non-radiological construction debris shipped for disposal	Disposal: Between \$50-60 ton Transportation: Between \$100 - \$500 per truckload

* Some disposal costs are determined by DOE Indefinite Delivery, Indefinite Quantity (IDIQ) contracts

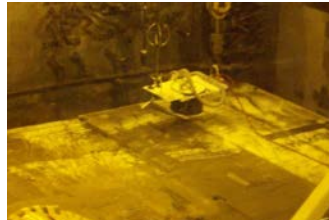
Milestone 3 - Facility Disposition

Continued deactivation and cleanout of Main Plant Process Building (MPPB) and Vitrification Facility

- Asbestos abatement in 1st floor Plant Office of MPPB
- Deactivation and decommissioning activities
 - Analytical Hot Cells
 - Extraction Sample Aisle
 - Liquid Waste Cell
 - Vitrification Facility
 - Preparing for work in the Sample Storage Cell and Extraction Cell #1



Asbestos Abatement



Remote Vacuuming in the Vitrification Facility

Milestone 4 - Balance of Site Facilities

- Continuing miscellaneous structure removals
- Backfilling and seeding completed at demolition areas
 - Expanded Environmental Lab
 - Diesel Fuel Oil Tank Pad
 - T-FS-04 Building
 - Vit Fab Shop Pad
 - Vitrification Test Facility Waste Storage Pad
- Completed installation of first water well



Water Well Installation

Questions?