



U.S. DEPARTMENT OF
ENERGY

OFFICE OF
ENVIRONMENTAL
MANAGEMENT

WVDP Project Update

John Rendall
Deputy General Manager

**Citizen Task Force Meeting
July 24, 2019**

OFFICE OF
ENVIRONMENTAL
MANAGEMENT

Safety



Metric	June 2019 12-Month Rolling Average
TRC (12-Month Rolling Average)	1.42
DART (12-Month Rolling Average)	0.71
Last Lost-Time Case Recordable	June 2019
Last Recordable Injuries	March 2019

Contract Scope

Milestone 1

- Complete relocation of 275 HLW canisters and 3 non-conforming HLW canisters to Long-term Interim Storage (Completed February 2017)

Milestone 2

- Process, ship, dispose of all Legacy Waste, not including Transuranic Waste (Completed September 2018)

Milestone 3

- Demolish and remove the Vitrification Facility and Main Plant Process Building (Deactivation ongoing, DOE is reviewing input from CHBWW regarding MPPB demolition – previously deferred)

Milestone 4

- Complete all work in Performance Work Statement, including Balance of Site Facilities, Surveillance and Maintenance, and Site Operations (Ongoing)

Deactivation and Demolition Progress

- Milestone 3 - Main Plant Process Building Deactivation – 98% Completed
- Milestone 4 - Balance of Site Facilities Demolition – 38 of 47 Facilities Completed and Areas Restored (81%)



Main Plant Process Building Deactivation (MPPB) – Milestone 3

- Five crews are performing deactivation and decontamination in MPPB
 - Completed Asbestos-Containing Material (ACM) wall plaster material removal from the west wall of the Control Room (fourth floor).
 - Removed approximately 56,000 pounds of ACM.
 - Commenced post-abatement cleanup for obtaining final clearance samples.
 - Completed preparations for ACM removal in the east stairwell and continued in the former women's locker room.



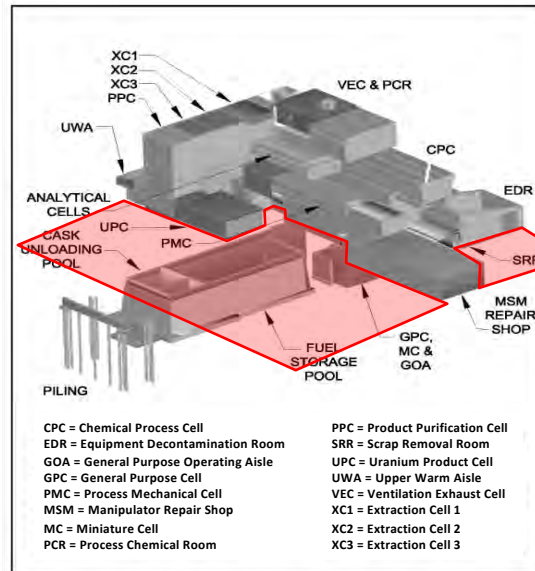
ACM removal from the fourth floor of the Main Plant

MPPB Details and Specifications

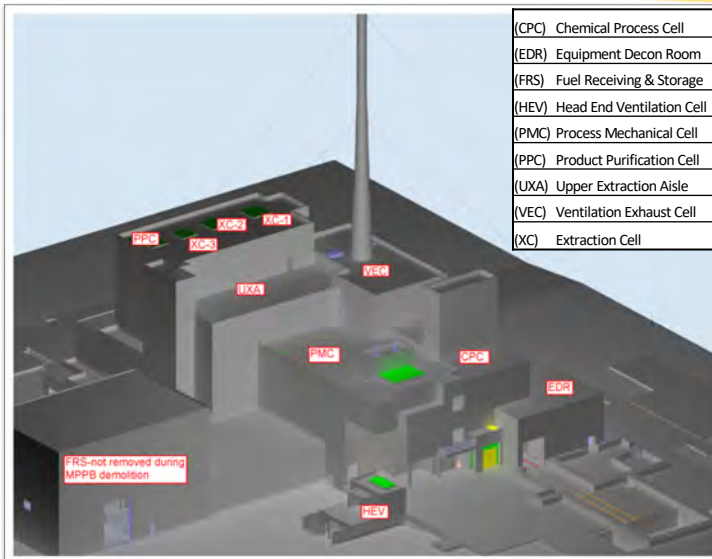


- Built between 1963 and 1966
- Processed spent fuel between 1966 and 1972
- 130 ft. X 270 ft. X 79 ft. high
- Extends 27 ft. below grade (General Purpose Cell)
- Walls range in thickness from 1 ft. – 6 ft. with most hot cells 3 ft. – 5 ft.

MPPB Details and Specifications



MPPB Focus Areas



(CPC) Chemical Process Cell	After GPC – New Scope
(EDR) Equipment Decon Room	After GPC – New Scope
(FRS) Fuel Receiving & Storage	New Scope – Working
(HEV) Head End Ventilation Cell	Completed – Demo'd
(PMC) Process Mechanical Cell	Completed – Demo Ready
(PPC) Product Purification Cell	Working
(UWA) Upper Extraction Aisle	Completed – Demo Ready
(VEC) Ventilation Exhaust Cell	Completed – Demo Ready
(XC) Extraction Cell	Completed – Demo Ready

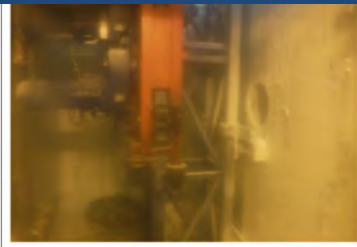
New Work Scope

- MPPB New Scope (added when Main Plant demolition was deferred):
 - General Purpose Cell (GPC) Crane Room (GCR)/GPC Operating Aisle – Began stabilization (foaming) of wall penetrations. Performed video inspection of the cell contents using the bridge crane camera and lighting.
 - Product Purification Cell-South (PPC-S) – Completed setup of the Nitrocision® compressor and nitrogen tank in preparation for mockups. Performed vendor training with the crew on the Pen-Tek vacuum which will be used for aggressive decontamination.
 - Fuel Receiving and Storage (FRS) Facility – Commenced ACM removal activities on the piping in the south aisle.

Fuel Receiving and Storage



Product Purification Cell-South



Demolition of 7 Ancillary Support Structures – Milestone 3

- Four out of seven buildings have been completed:
 - Contact-Size Reduction Facility
 - Manipulator Repair Shop
 - Laundry Facility
 - Utility Room Extension (debris loadout continues)
- Next demolitions:

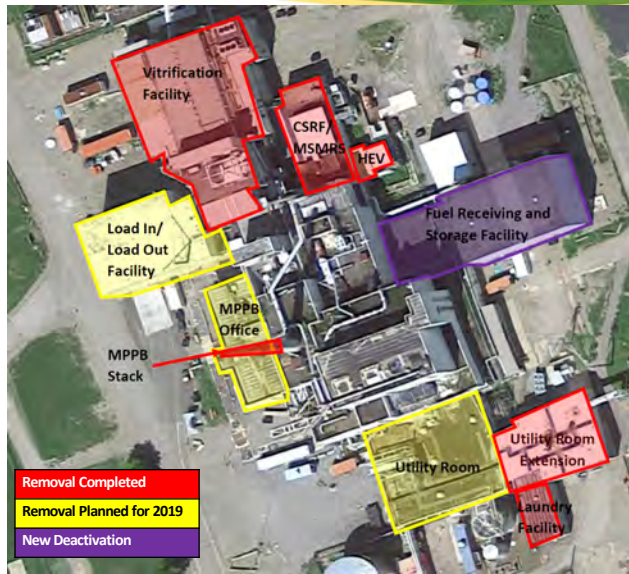
	<u>Schedule</u>
• Main Plant Office	August 8
• Load-In Facility	Sept. 26
• Utility Room	Jan. 8, 2020



An excavator with a shear attachment is used to remove the stairs in the Utility Room Extension building during demolition

NOTE: Schedule subject to change

Demolitions and Deactivations – Milestone 3



Utility Room Extension Building Demolition – Milestone 3



Balance of Site Facilities (BOSF) and Infrastructure – Milestone 4

- Performing deactivation to support removal of 47 Balance of Site Facilities
 - Completed demolition of Liquid Pretreatment System (LPS) building located in the NRC-Licensed Disposal Area and Utility Room Extension
 - Completing the installation of the permanent protective cover
 - Started Waste Tank Farm Equipment Shelter demolition
 - 38 facilities demolished and areas restored
- Reconfiguring infrastructure for facility demolition and future site needs
 - New electrical substation (Phase 2)
 - Connect to National Grid's new 34.5 kV feed line



Inside view of LPS during demolition preparations



Liquid Pretreatment System Demolition



Upcoming Demolitions

- Chemical Process Cell – Waste Storage Area



- Main Plant Office Building

