



U.S. DEPARTMENT OF
ENERGY

OFFICE OF
ENVIRONMENTAL
MANAGEMENT

WVDP Project Update

Main Plant Process Building
Deactivation and Demolition Preparations

Kelly Wooley
Deputy General Manager

Citizen Task Force Meeting
March 23, 2022
(Virtual)

1

OFFICE OF
ENVIRONMENTAL
MANAGEMENT

Safety

Metric	February 2022 12-Month Rolling Average
Total Recordable Cases (TRC)	0.33
Days Away Restricted or Transferred (DART)	0.33
Last Lost Time Case Recordable	May 1, 2021
Last Recordable Injury	August 27, 2021

Background Photo: Lake 1 on WYNSC property

2

COVID-19 Controls

- On March 9, CHBWV lifted masking requirements based on new guidance from the Safer Federal Workforce Taskforce and Centers for Disease Control and Prevention (CDC)
- COVID-19 Phase 2 activities such as system rounds, preventive maintenance and cleaning/sanitizing activities continue with an increased emphasis on basic safety measures (e.g., washing your hands frequently, refraining from touching your face, utilizing face protection, use hand sanitizer and disinfectant wipes, etc.)
- CHBWV will continue to monitor regional COVID-19 statistics and its personnel in accordance with CDC guidance

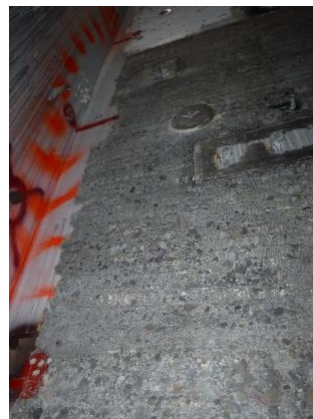
3

Main Plant Deactivation

- **Product Purification Cell (PPC)** – Continued aggressive decontamination on the lower south wall; completed additional characterization of all four walls; and finalizing the analysis of the sample results (Cell decontamination status is 1,090 of 2,400 square feet completed to date)
- **Ventilation Wash Room (VWR)** – Completed the cutting and removal of the ventilation duct (28 cuts completed and 19 sections removed)



Section of vent duct in VWR



Wall inside PPC-5 after aggressive decontamination (February 2022)

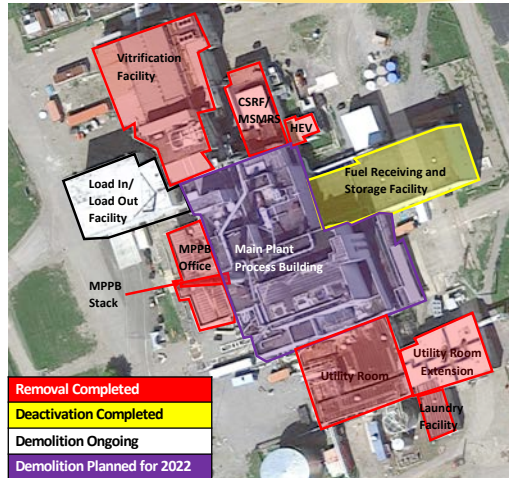
4

Demolition of Ancillary Support Structures

- Load-In/Load-Out Facility** – Completed demolition; preparing for the removal of piping from the Off-Gas Trench that was located under the facility



Load-In Facility demolition



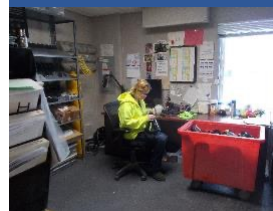
*Ancillary support structures surround the Main Plant (six of seven structures have already been demolished)

5

Main Plant Demolition Preparations

- Water Management System** – Continuing to finalize testing, training, PMs and calibrations; finalizing Standard Operating Procedures for operation of the system and sending them to reviewers for comment; system targeted to be ready by mid-March
- 10-Plex Office Complex** – All activities completed
- Drum Cell Modifications** – Major modifications completed with minor punch list items remaining; started prepping intermodals

*FRS – Fuel Receiving & Storage facility (deactivated)



6

- **Permeable Treatment Wall (PTW) Activities**

- Completed excavation, demolition, and loading of intermodals; began decontaminating and demobilizing the excavators; and grading area for topsoil and seeding in Spring
- As of March 9, 2022:
 - Filled and characterized 300 (soil) and 131 (debris) intermodals
 - Shipped 427 IMs to EnergySolutions on 73 rail cars
 - Received and prepared 231 empty intermodals



June 2021



Grading area for topsoil and seeding in the Spring (March 2022)



7

- **Culvert Replacement Project**

- Completed the replacement of a large culvert on an onsite roadway that will carry heavy equipment during Main Plant demolition
- Six (6) precast concrete sections
- Equaling 40 linear feet
- Average weight of 16,000 pounds each
- Wing wall constructed of 72 blocks with weights varying from 300 to 2,600 pounds



Culvert Replacement Project



8

NEW WORK SCOPE:

- **New Guard House** – Waiting for bids for the design and installation of a new guardhouse; bids due early this month
- **Legacy Waste (CPC Degraded Containers)** – Drawing from the vendor for a shielded overpack is being reviewed; and delivery is still expected in the third quarter of 2022
- **Tank Sampling (8D-4)** – Continue to develop plans for the type of sampling needed to characterize waste (~1,100 gallons of sludge and ~2,800 gallons of liquid) in underground tank 8D-4 (Tank Farm); work area modifications have been identified to support activities required before sampling and fabrication of hardware has been initiated
- **Lagoon 4/5 Re-Route** – Conceptual design of the re-route continues to be developed